

AMKOR IS AMERICA IN KOREA

Amkor's assembly plant is located in Seoul, the capital of Korea. All production and assembly equipment is of American manufacture and our Korean engineering and production people are fully trained in American techniques and standards. Workmanship is to U.S. mil. std. 883, class C, and, while assembly is to customer specifications, all assemblies are inspected to this standard at no extra cost.

PRODUCTION MANAGEMENT

Freed from administrative and logistical chores, our Paoli based engineering and production staff devotes full time to engineering, setting up and managing customer production. In this way, Amkor clients have a direct link with the Seoul plant and their production. Initial production is set up more quickly, and problems which arise get immediate attention. Production problems are reduced and yields increased.

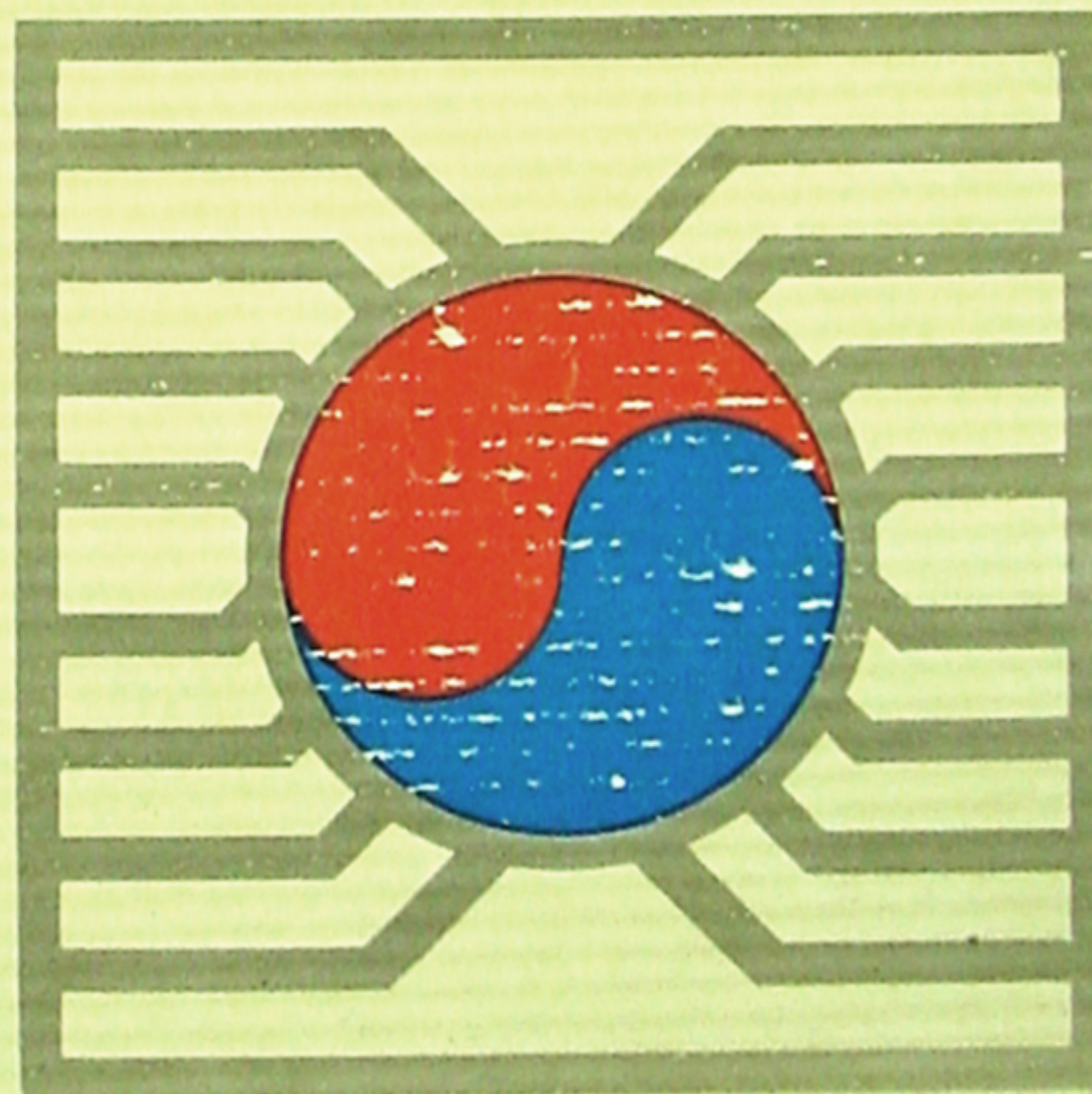
KOREA— A GOOD PLACE TO DO BUSINESS

Picture a people, fired with the ambitions of transition from an agrarian to an industrial society, which in two decades has become ninety percent literate.

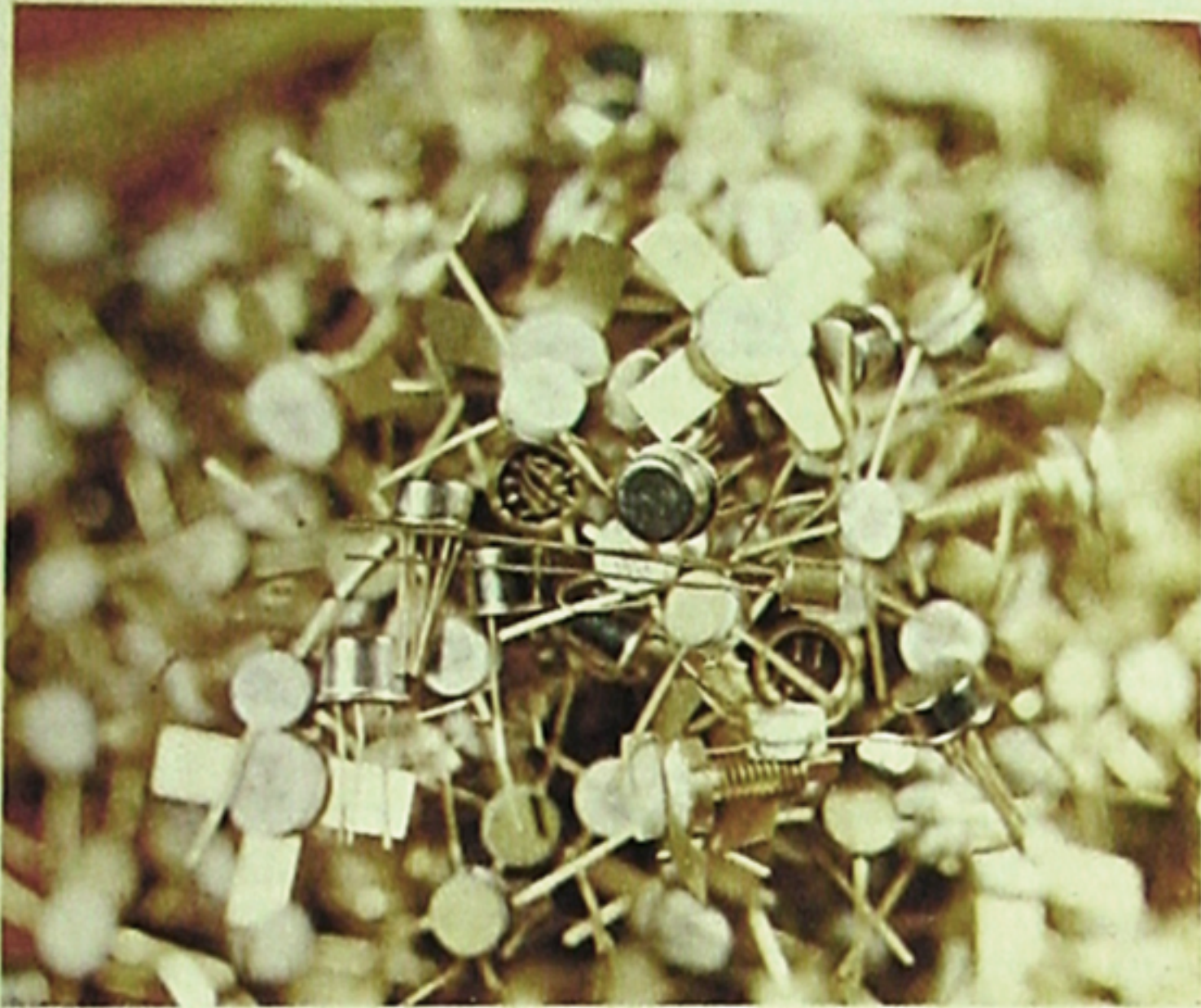
Envision workers who manifest the meticulous attention to detail, the patience, and the tireless energy emblematic of Far Eastern cultures.

Imagine a nation which has clung to its traditions in the face of oppression, amazingly aware of its double deliverance in this century, and you have a picture of one of America's most loyal friends in the international community.

Here we have an environment which has been fertile for free enterprise. The Korean government is committed to the encouragement and protection of foreign enterprise. A five-year umbrella shields the investor from import duties, corporation tax, etc. Investment capital is not, however, required for participation in the profits of this industrial climate on a subcontract basis.



ANAM INDUSTRIAL CO., LTD.
151-22, Hwayang-dong, Songdong-ku
Telephone: 55-2266, 55-0537
TELEX: ANAMIC 2681S



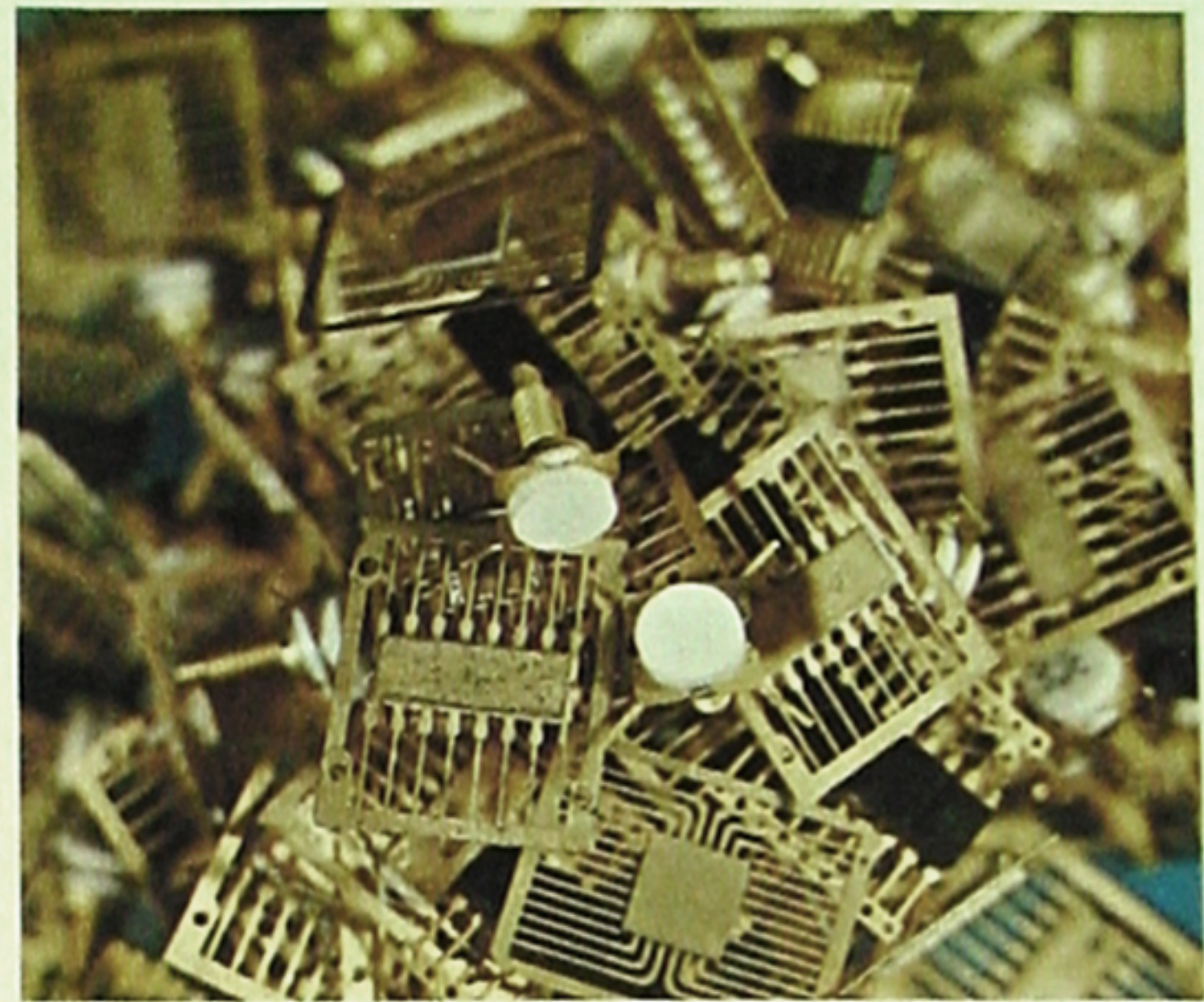
Korea, Amkor is currently investigating other assembly locations in the Western Hemisphere as well as in Asia.

CUSTOMER RELATIONS:

With production know-how in U.S. headquarters and in Korea, plus Telex communications connecting the two, problems are quickly solved and lost time minimized. *Our people are available and will visit your plant as required.*

SAMPLING:

While present customers know the quality of our work, we have a sampling program which can be tailored to requirements of new customers.



OTHER SERVICES:

Our electronic know-how and our familiarity with Korean customs and industrial development can be useful to companies interested in setting up their own operation in Korea or in having us develop and operate their Korean facilities.

Call or Write:

Experienced buyers of offshore electronics assembly like doing business with Amkor. They get the low prices of "offshore" without the added cost of investment in production facilities, and they feel it is as close as they can get to assembling in their own plant. If you are looking for something better, call or write. We will appreciate your inquiry.

